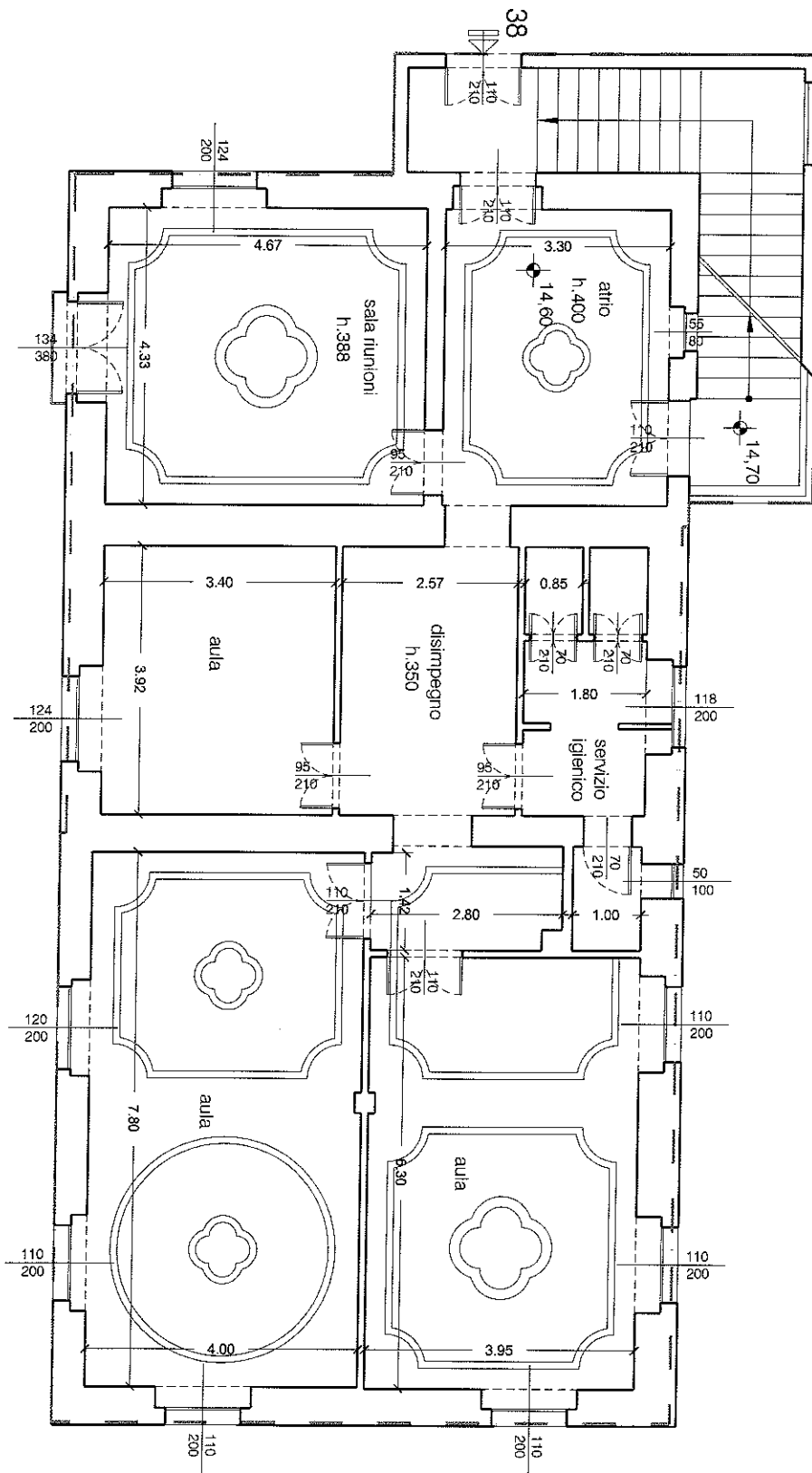
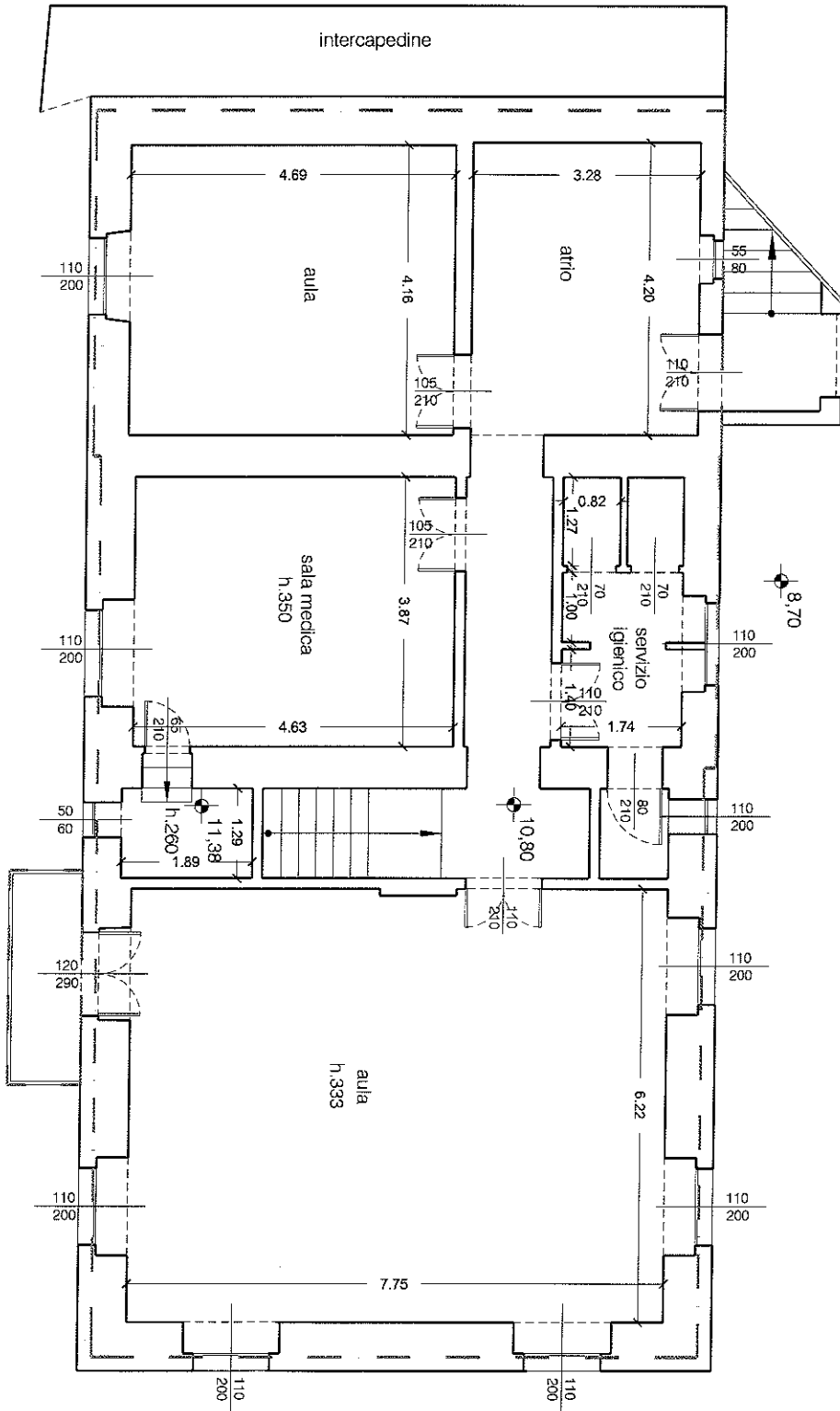


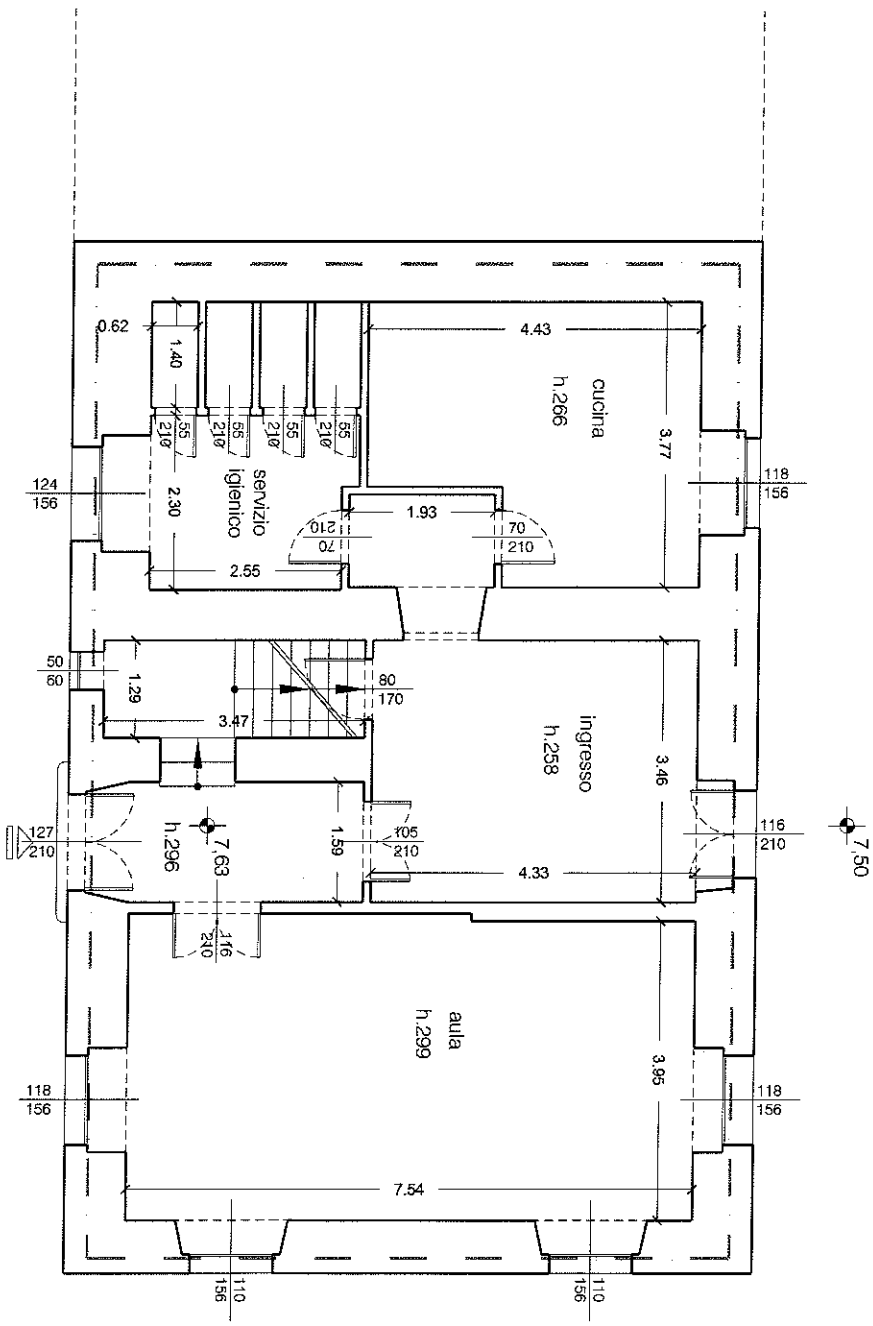
Edificio A - piano sottotetto, quota 18,40/19,05 m, superficie 58,53 + 29,97 = 88,50 mq
 superficie accessoriata - 41,17 mq
 terrazzo - superficie 18,81 mq

Edificio A - piano secondo, quota 14,60 m, superficie 184,33 mq

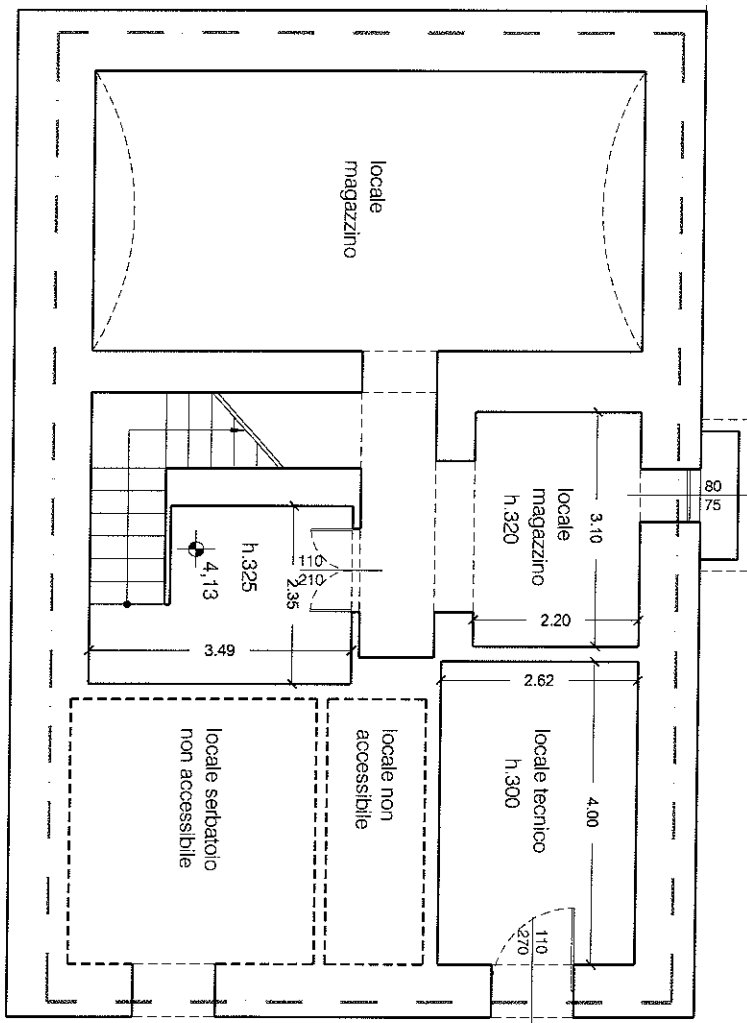




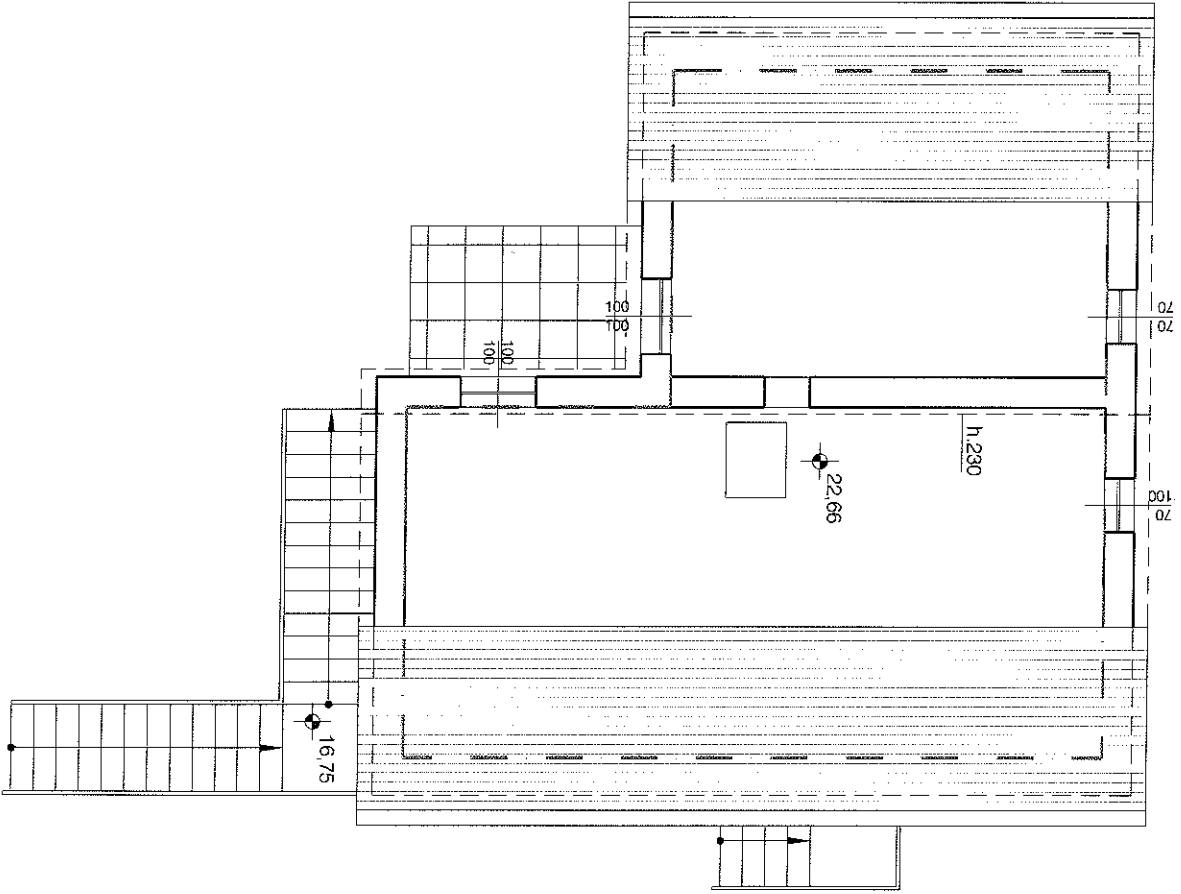
Edificio A - piano primo, quota 10,80 m, superficie 158,83 mq
 poggiolo - superficie 3,23 mq



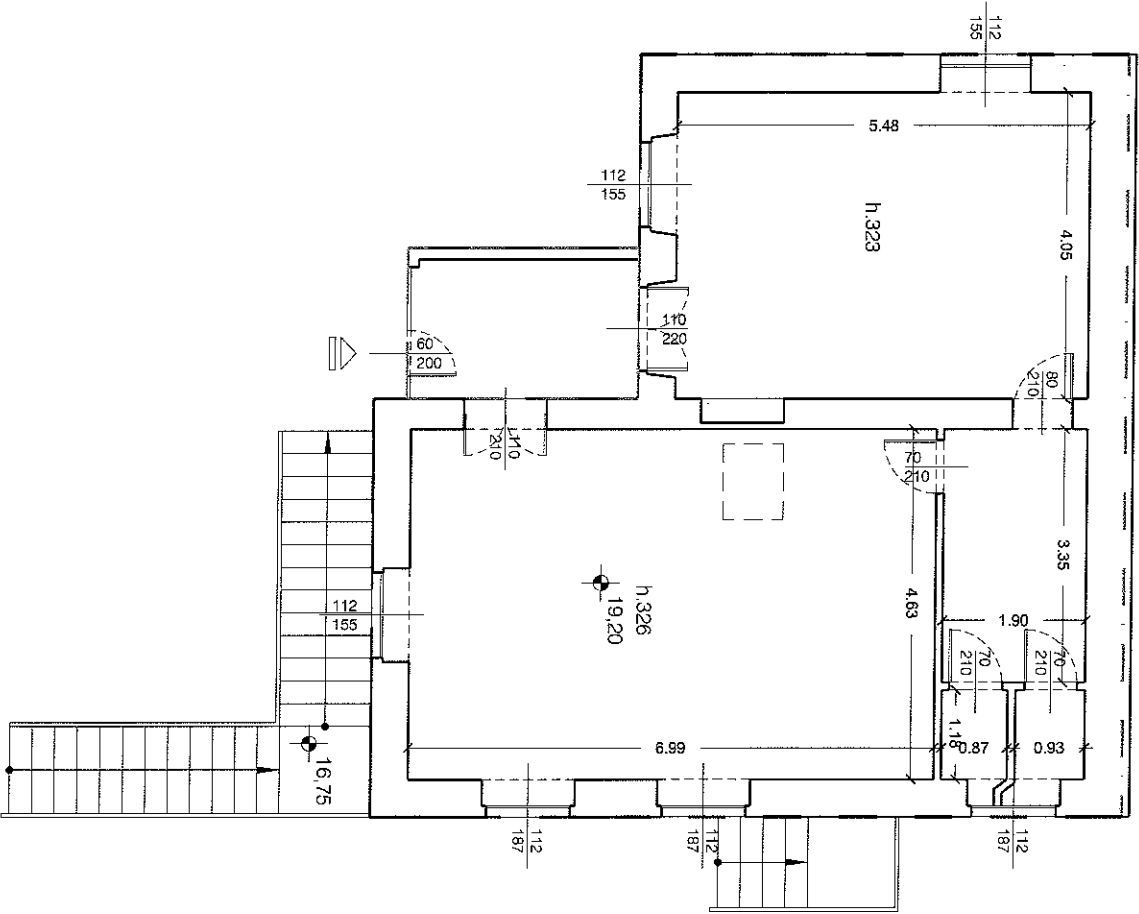
Edificio A - piano terreno, quota 7,63 m, superficie 112,13 mq



Edificio A - piano seminterrato, quota 4,13 m, superficie 106,37 mq



Edificio B - piano sottotetto, quota 22,66 m, superficie accessoriata - 68,73 mq



Edificio B - piano primo, quota 19,20 m, superficie 84,70 mq
 veranda - superficie 6,11 mq

